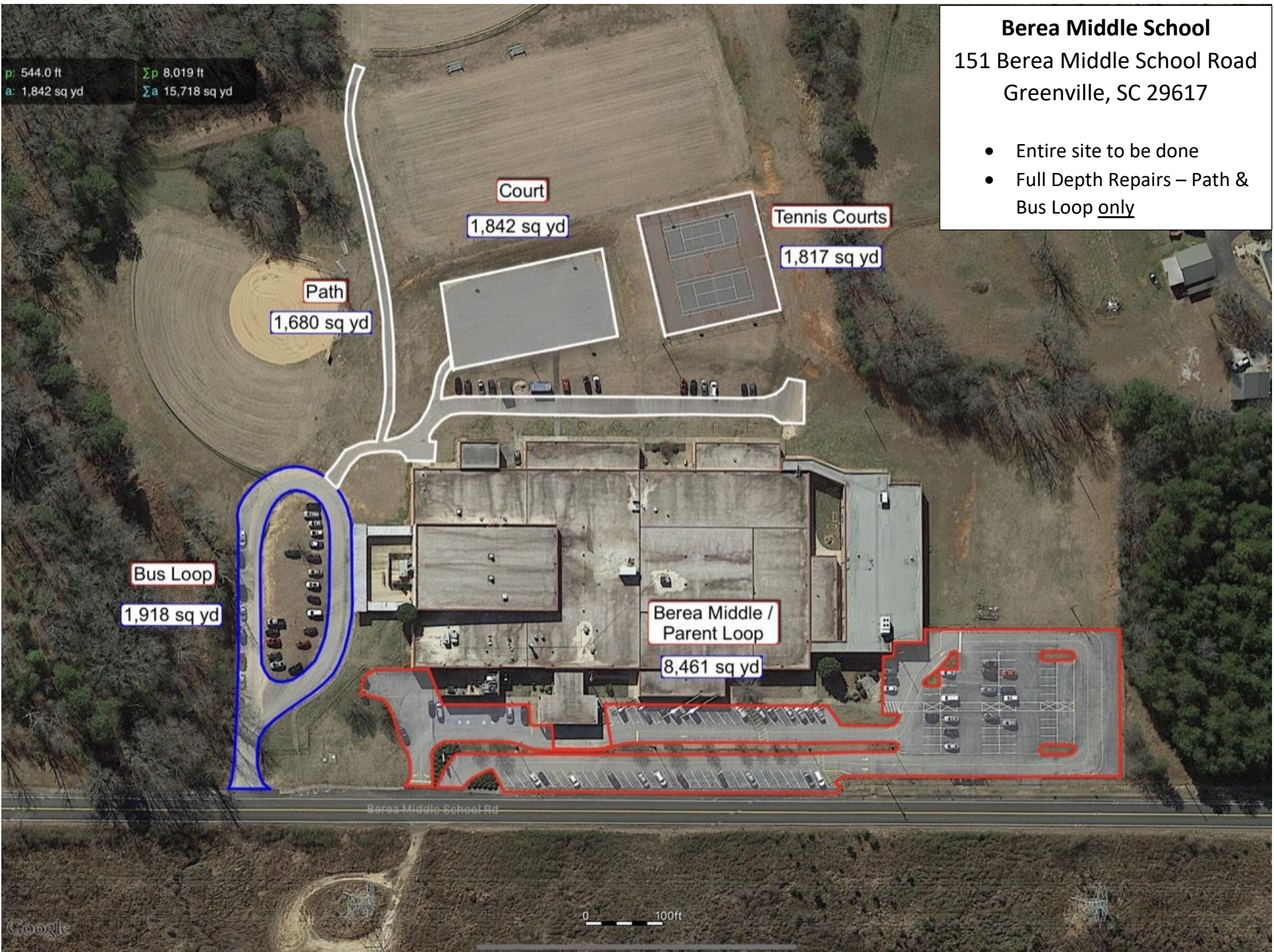


p: 544.0 ft
a: 1,842 sq yd

Σp 8,019 ft
 Σa 15,718 sq yd

Berea Middle School
151 Berea Middle School Road
Greenville, SC 29617

- Entire site to be done
- Full Depth Repairs – Path & Bus Loop only



p: 0.0 ft
a: 0 sq yd

Σp 8,018 ft
 Σa 15,718 sq yd



Court

1,842 sq yd

Tennis C

1,817

F10

F9

F8

Path

F7

F11

F6

1,680 sq yd

F1

F2

F3

F7

F5

F4

Apple Maps



p: 544.0 ft
a: 1,842 sq yd
 Σp 8,019 ft
 Σa 15,718 sq yd



p: 1,359 ft
a: 14,753 sq yd

Σp 11,062 ft
 Σa 15,244 sq yd

Lakeview Middle School
3801 Old Buncombe Road
Greenville, SC 29617

- Entire site to be done
- Full Depth Repairs – Parent Loop & Access Road only

Access Road
1,219 sq yd

Bus Loop
3,610 sq yd

Lakeview Middle / Parent Loop
6,838 sq yd

Walking Path
823.12 sq yd

Court
2,754 sq yd

p: 1,359 ft
a: 14,753 sq yd

Σp 11,062 ft
 Σa 15,244 sq yd

Court

2,754 sq yd

Lakeview
Middle / Parent
Loop

6,838 sq yd

LITS

F1

0 50ft

Google





p: 1,311 ft
a: 12,401 sq yd

Σp 10,658 ft
 Σa 20,647 sq yd

Blue Ridge Middle School
2423 E. Tyger Bridge Road
Greer, SC 29651

- Tennis Court, Court 1 & Court 2 only

Walking Path

4,937 sq yd

Court 2

733.28 sq yd

Court 1

794.64 sq yd

Tennis Court

1,567 sq yd

Old Baseball
Parking

3,260 sq yd

Bus Loop

5,038 sq yd

Blue Ridge
Middle / Parent
Loop

4,318 sq yd

0 100ft

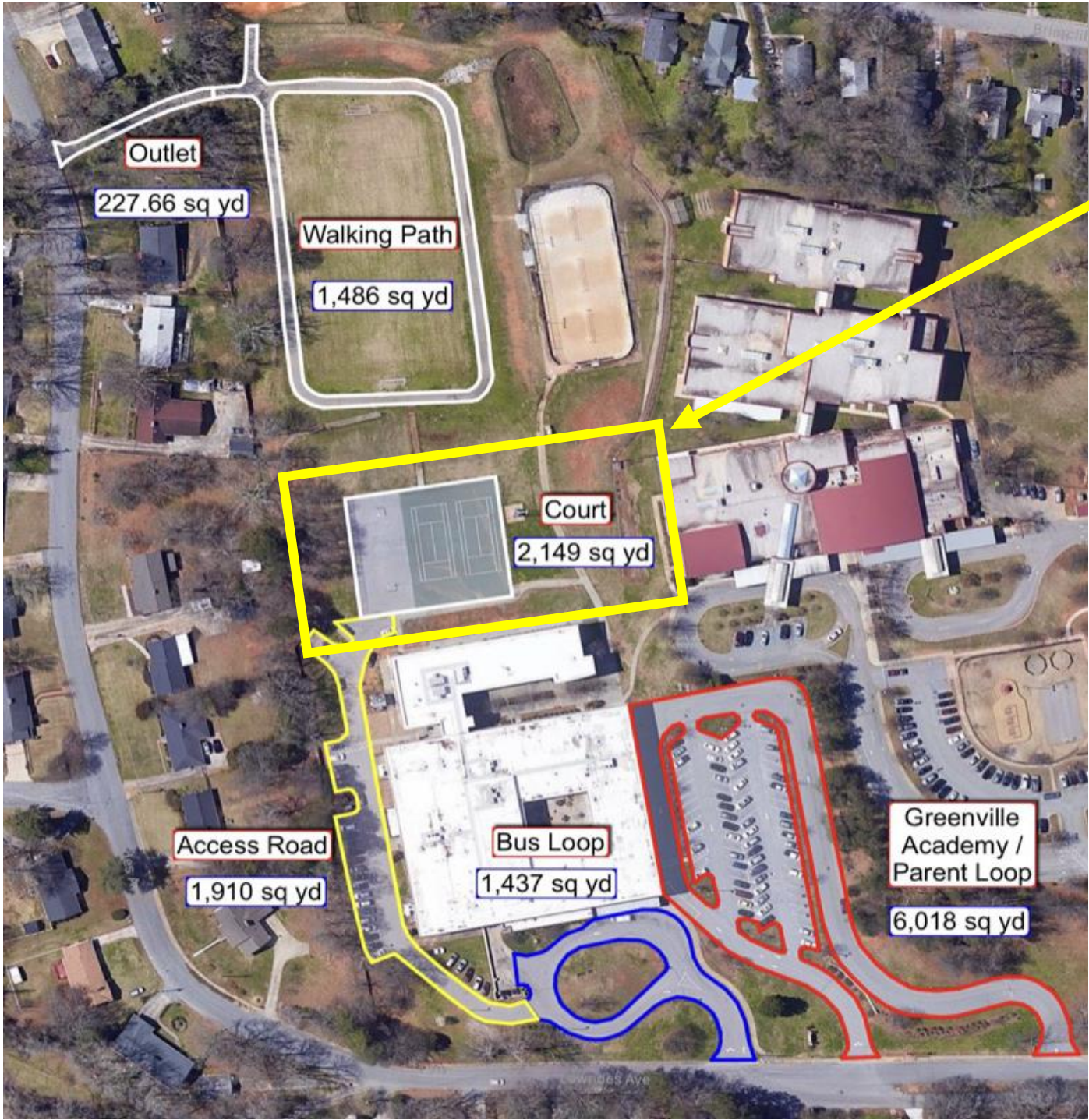
Google

E Tyger Bridge Rd

Old Tyger Bridge Rd

S Blue Ridge Dr

E Tyger Bridge Rd



Greenville Middle School

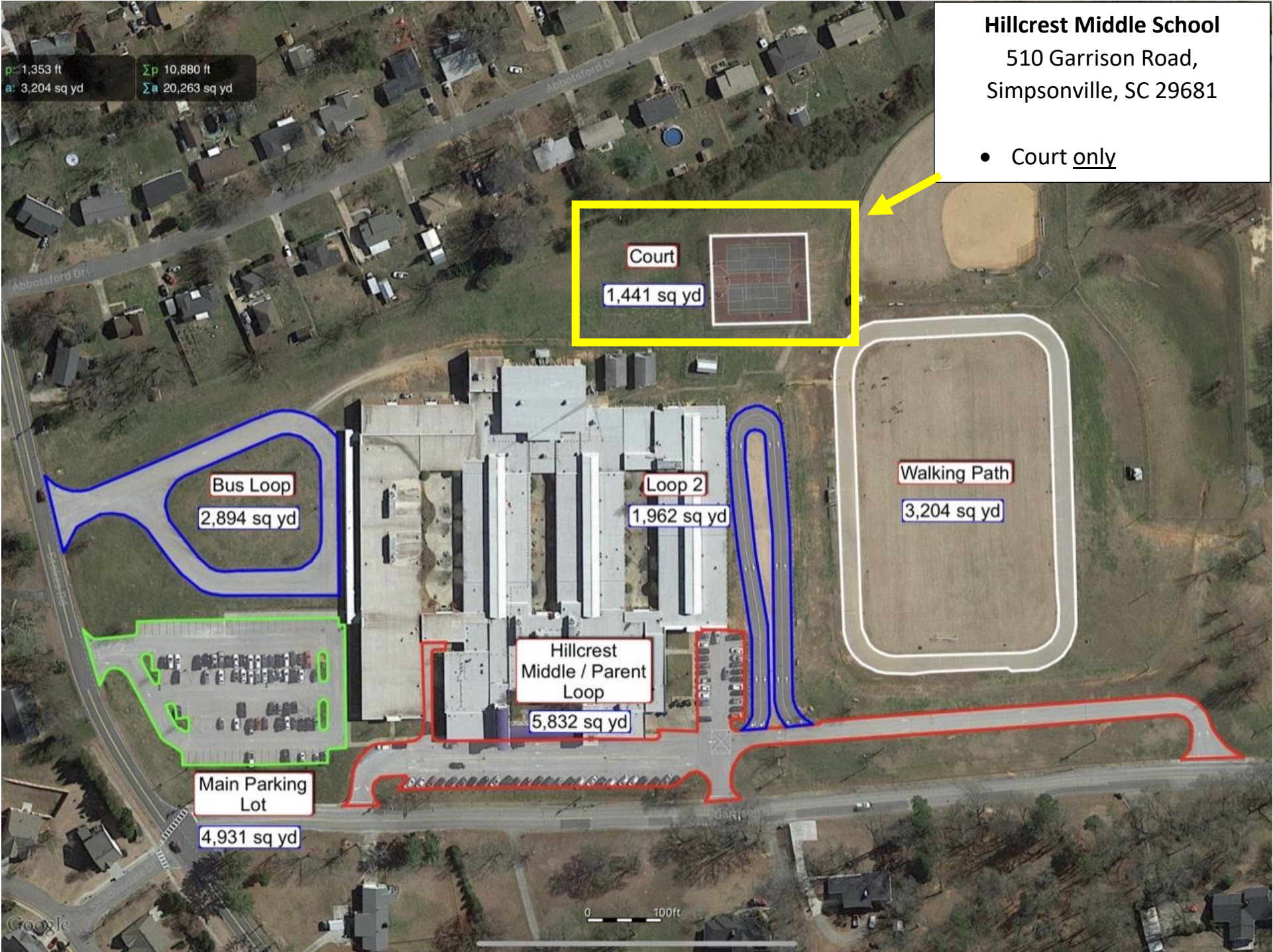
339 Lowndes Avenue
Greenville, SC 29607

- Court only

Greer Middle School
3032 E. Gap Creek Road
Greer, SC 29617

- Court 1 & Court 2 only





p: 56.2 ft
a: 17.57 sq yd

Σp 8,090 ft
 Σa 13,614 sq yd

Hughes Academy
122 DeOyley Avenue,
Greenville, SC 29605

- Court only

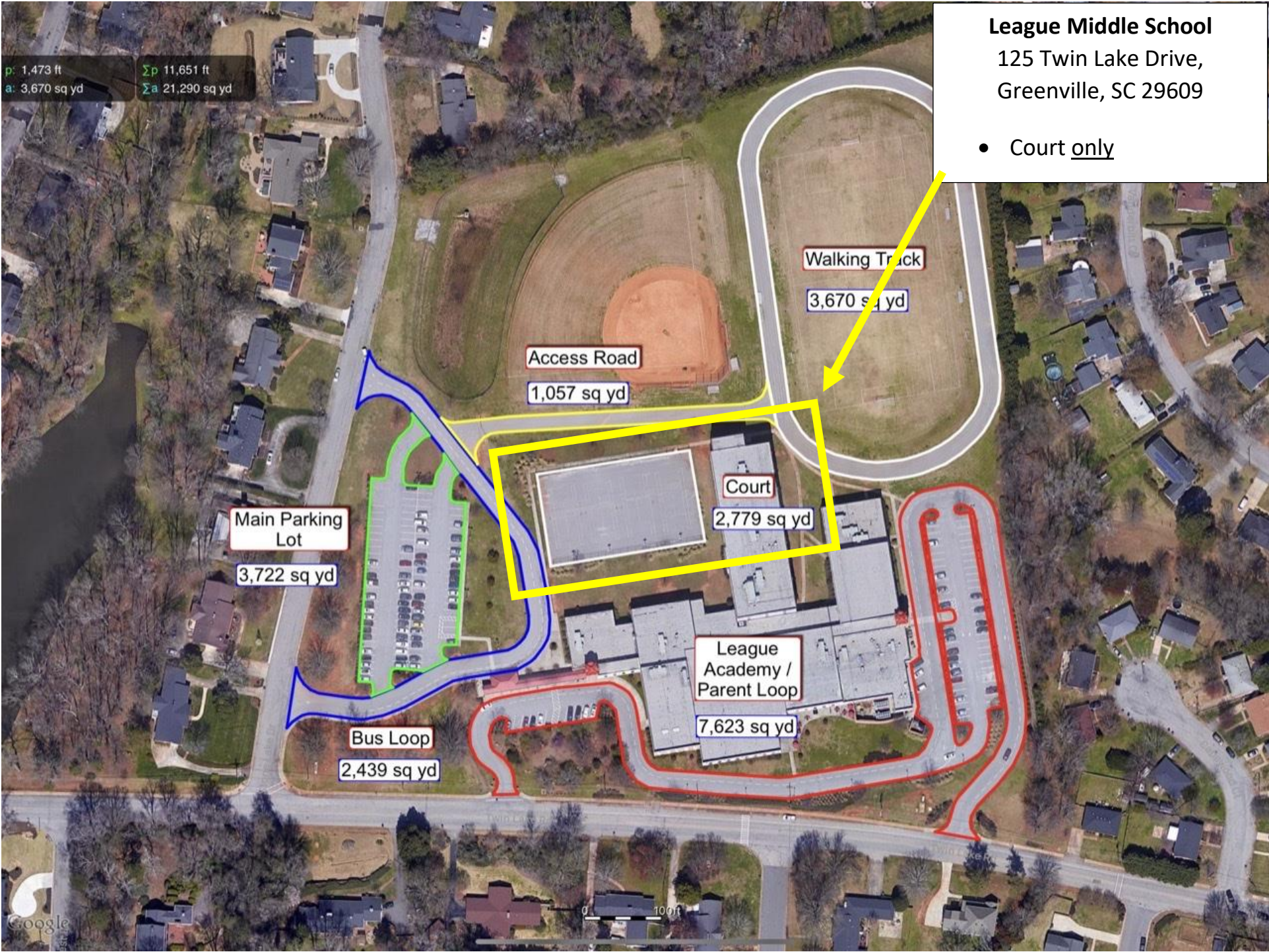


p: 1,473 ft
a: 3,670 sq yd

Σp 11,651 ft
 Σa 21,290 sq yd

League Middle School
125 Twin Lake Drive,
Greenville, SC 29609

- Court only



p: 481.9 ft
a: 1,612 sq yd

Σp 11,745 ft
 Σa 23,210 sq yd

Mauldin Middle School

1190 Holland Road,
Simpsonville, SC 29681

- Court 1 & Court 2 only



p: 994.3 ft
a: 570.94 sq yd

Σp 10,168 ft
 Σa 16,560 sq yd

Northwest Middle School
1606 Geer Highway
Travelers Rest, SC 29690

- Court & Tennis only

Access Path

570.94 sq yd

Bus Loop

3,912 sq yd

Walking Path

1,198 sq yd

Main Parking Lot

4,592 sq yd

Court

989.64 sq yd

Tennis Court

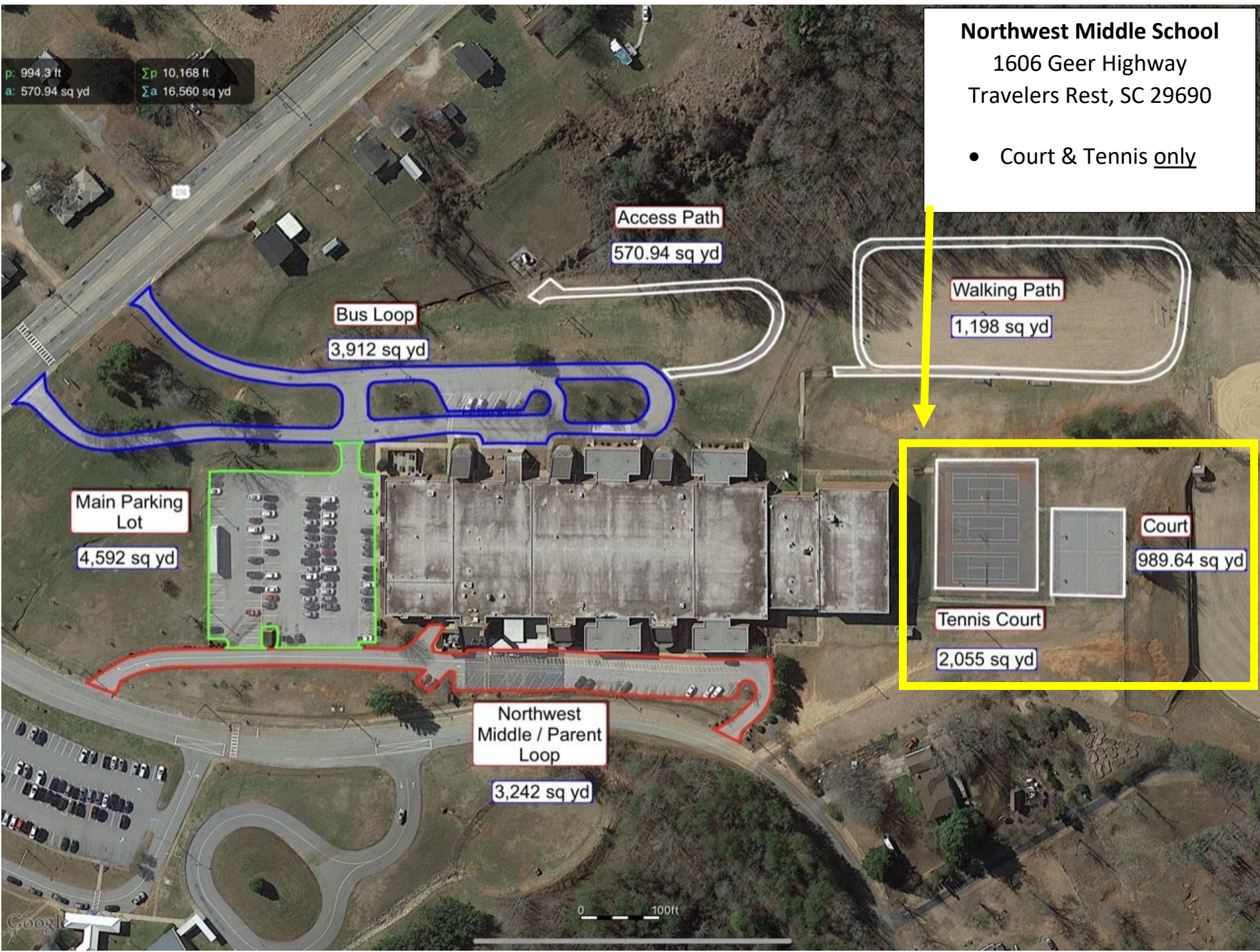
2,055 sq yd

Northwest Middle / Parent Loop

3,242 sq yd

0 100ft

Google

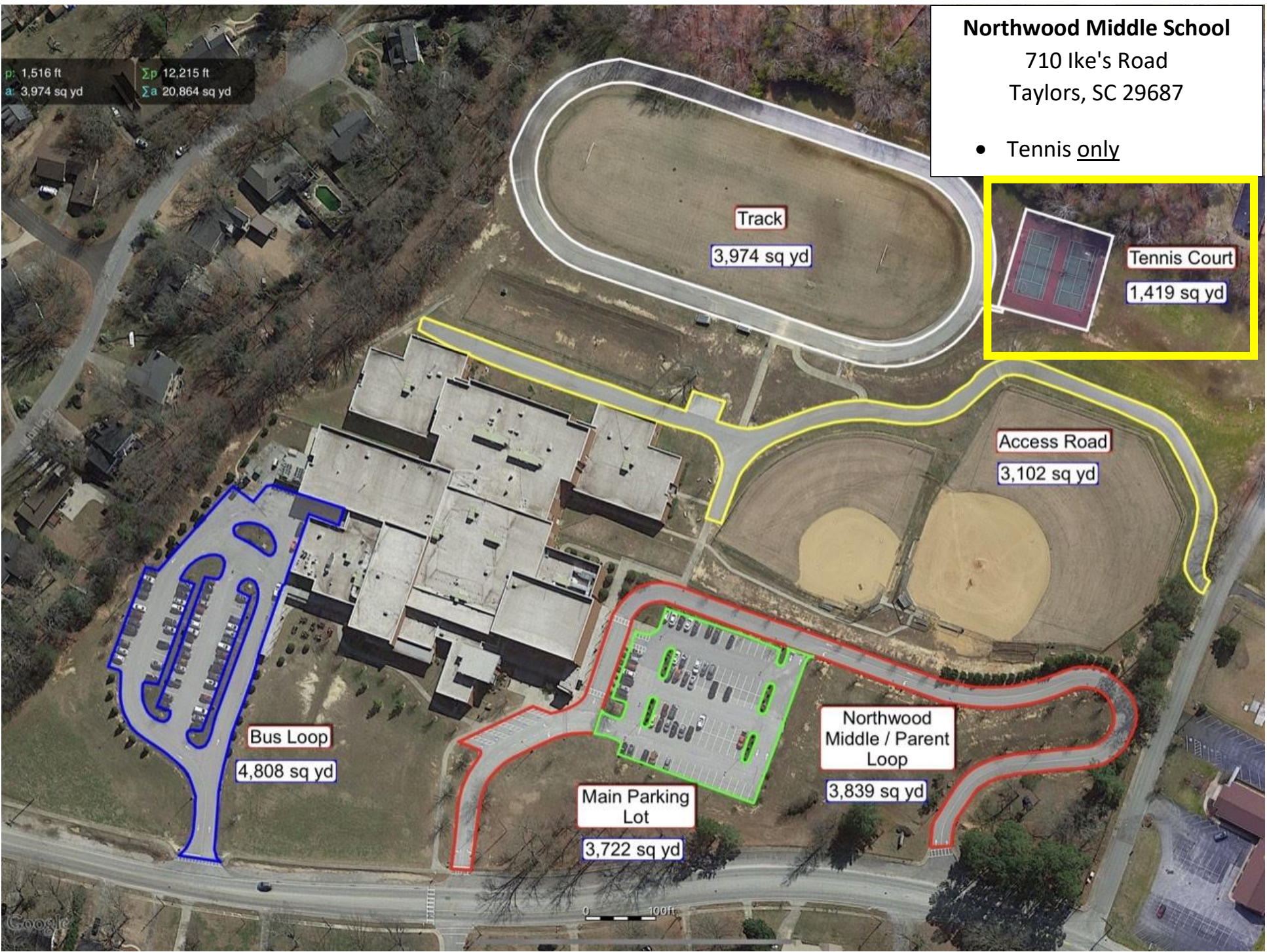


p: 1,516 ft
a: 3,974 sq yd
 Σp : 12,215 ft
 Σa : 20,864 sq yd

Northwood Middle School

710 Ike's Road
Taylors, SC 29687

- Tennis only



Track

3,974 sq yd

Tennis Court

1,419 sq yd

Access Road

3,102 sq yd

Bus Loop

4,808 sq yd

Northwood Middle / Parent Loop

3,839 sq yd

Main Parking Lot

3,722 sq yd

p 14,216 ft
a 18,414 sq yd

Ralph Chandler Middle School

4231 Fork Shoals Road,
Simpsonville, SC 29680

- Court only

Walking Path
3,164 sq yd

Access Road
1,440 sq yd

Court
2,678 sq yd

Main Parking Lot
2,881 sq yd

Ralph Chandler Middle / Parent Loop
4,771 sq yd

Bus Loop
6,362 sq yd

0 200ft

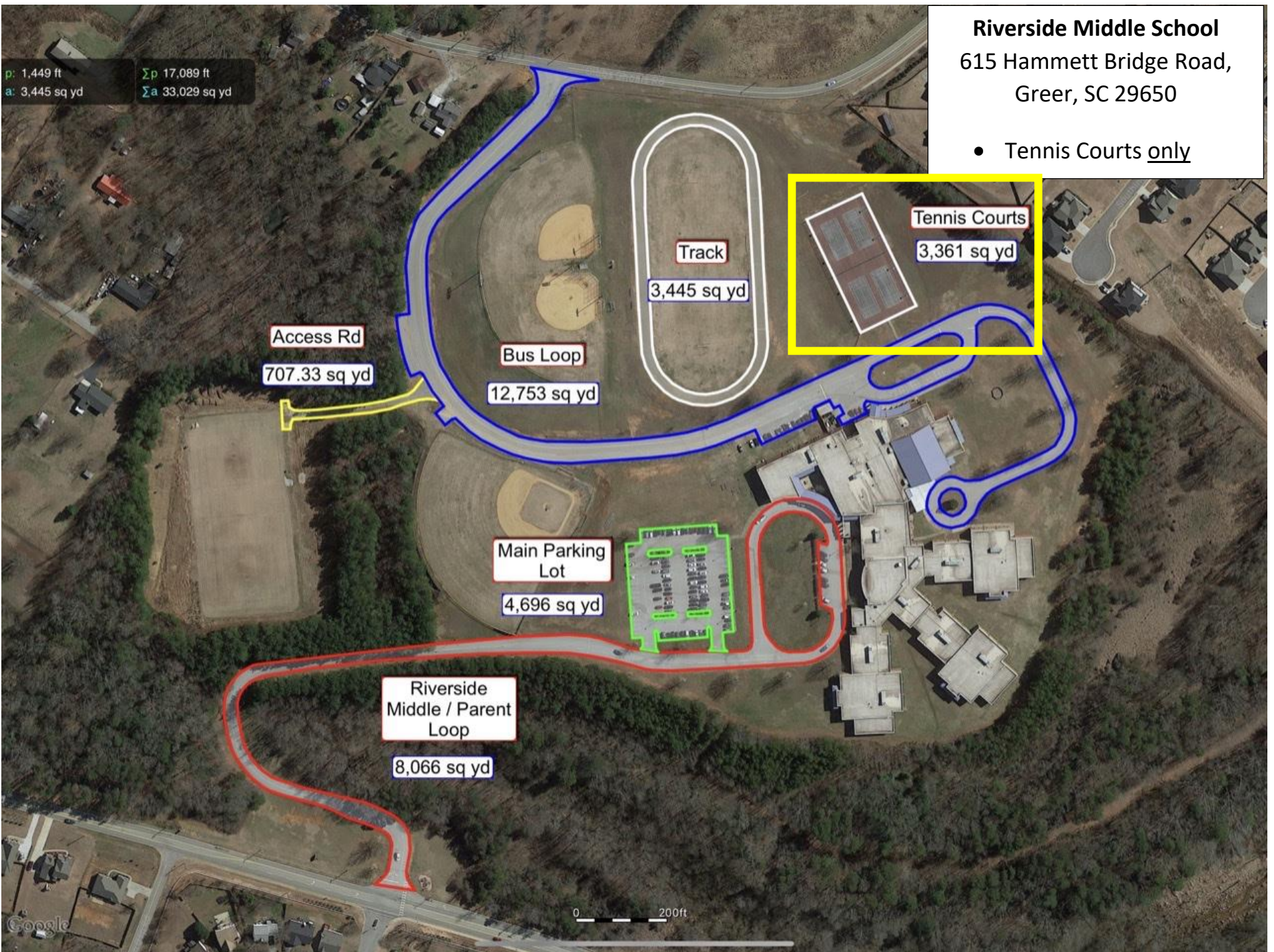


p: 1,449 ft
a: 3,445 sq yd

Σp 17,089 ft
 Σa 33,029 sq yd

Riverside Middle School
615 Hammett Bridge Road,
Greer, SC 29650

- Tennis Courts only



p: 1,840 ft
a: 2,362 sq yd

Σp 13,111 ft
 Σa 22,063 sq yd

Tanglewood Middle School
44 Merriwoods Drive,
Greenville, 29611

- Court only

Track
3,791 sq yd

Court
2,726 sq yd

Bus Loop
3,624 sq yd

Access Road 1
916.97 sq yd

Side Parking Lot
1,198 sq yd

Access Road 2
1,255 sq yd

Tanglewood Middle / Parent Loop
6,191 sq yd

Access Road 3
2,362 sq yd

